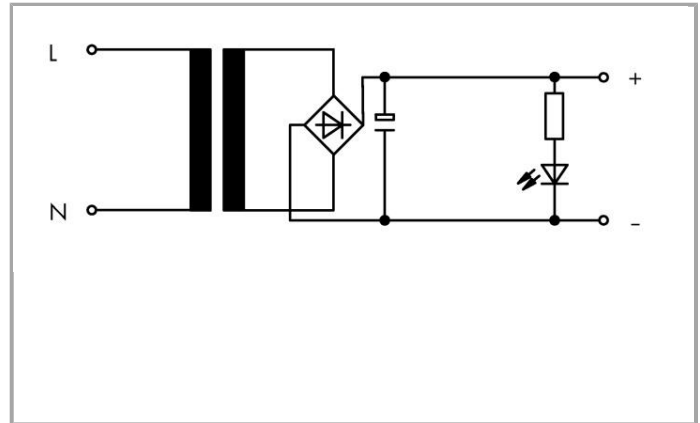
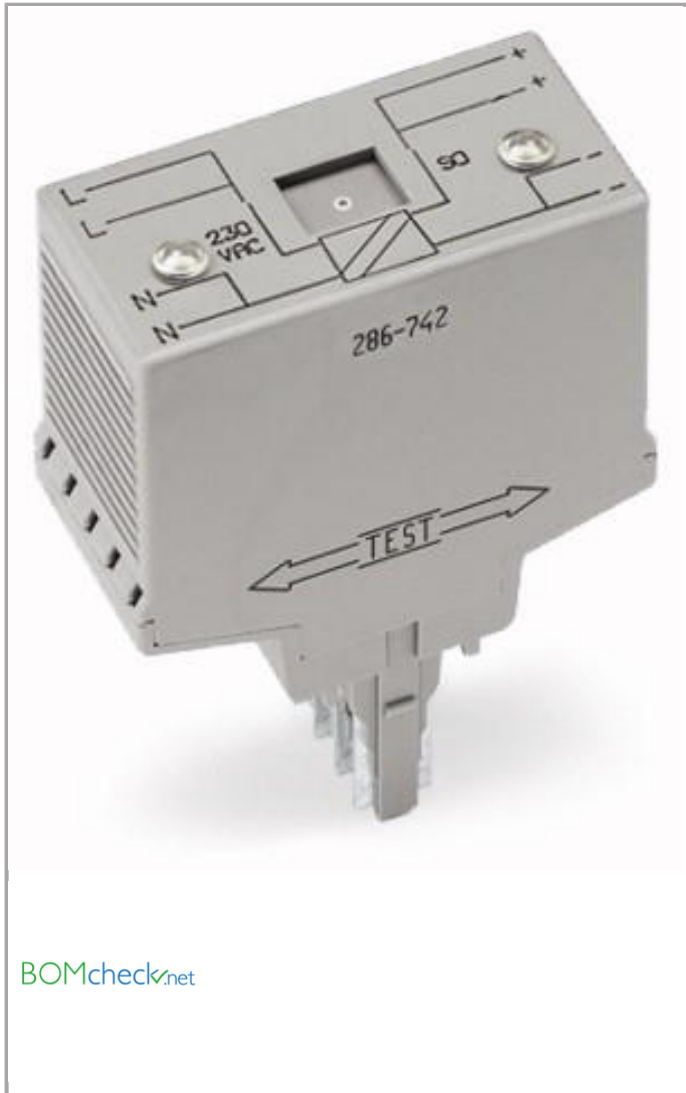
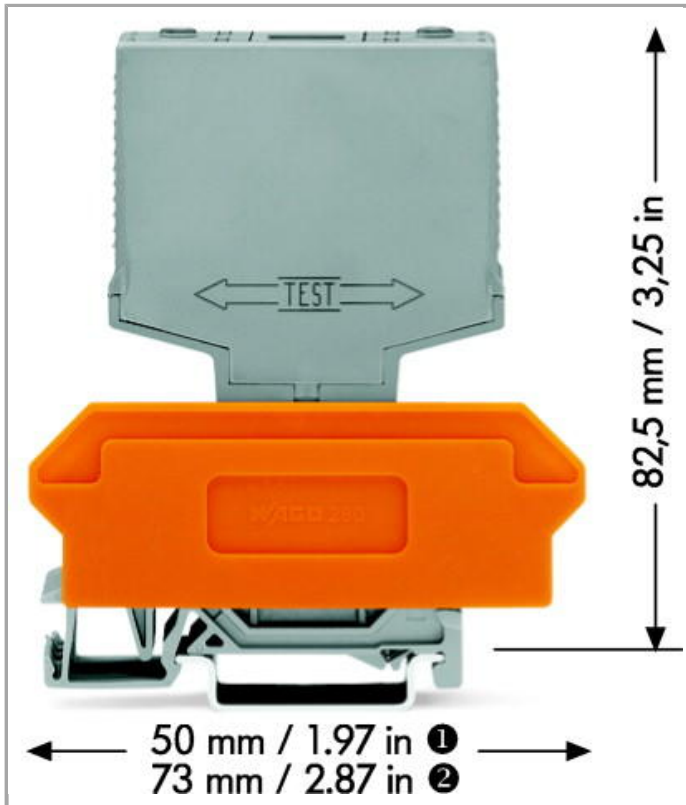


Data sheet | Item number: 286-742

S0 interface power supply; Input voltage: 230 VAC; S0 interface

www.wago.com/286-742





Item description

This compact module supplies power to passive S0 current meter interfaces.

Data

Technical Data

General specifications

Nominal operating voltage	230 VAC
Nominal mains frequency range	50 Hz
Max. output current	27 mA

Safety and protection:

Dielectric strength input / output	2.5 kV
------------------------------------	--------

Geometrical Data

Width	25 mm / 0.984 inch
Height from upper-edge of DIN-35 rail	82.5 mm / 3.248 inch
Depth	73 mm / 2.874 inch

Mechanical data

Type of mounting	Pluggable module for carrier terminal blocks
------------------	--

Material Data

Color	gray
Fire load	0.559 MJ
Weight	57 g

Environmental Requirements

Surrounding air (operating) temperature	0 ... 70 °C
Surrounding air (storage) temperature	-40 ... 80 °C

Standards and specifications





Standards/specifications	EN 60664-1; EN 60742
--------------------------	----------------------

Commercial data

Country of origin	DE
GTIN	4017332564403
Product Group	6 (Interface Electronics)

Compatible products

Marking accessories

	Item no.: 209-701 WSB marking card; as card; not stretchable; plain; snap-on type	www.wago.com/209-701
	Item no.: 209-701/000-002 WSB marking card; as card; not stretchable; plain; snap-on type	www.wago.com/209-701/000-002
	Item no.: 209-701/000-005 WSB marking card; as card; not stretchable; plain; snap-on type	www.wago.com/209-701/000-005
	Item no.: 209-701/000-006 WSB marking card; as card; not stretchable; plain; snap-on type	www.wago.com/209-701/000-006
	Item no.: 209-701/000-007 WSB marking card; as card; not stretchable; plain; snap-on type	www.wago.com/209-701/000-007
	Item no.: 209-701/000-012 WSB marking card; as card; not stretchable; plain; snap-on type	www.wago.com/209-701/000-012



Item no.: 209-701/000-017
WSB marking card; as card; not stretchable; plain; snap-on type

www.wago.com/209-701/000-017



Item no.: 209-701/000-023
WSB marking card; as card; not stretchable; plain; snap-on type

www.wago.com/209-701/000-023



Item no.: 209-701/000-024
WSB marking card; as card; not stretchable; plain; snap-on type

www.wago.com/209-701/000-024

Downloads

Documentation

Bid Text

286-742	Jan 15, 2016	DOC	Download
Interface-Bausteine mit Sonderfunktionen		24.1 kB	

Additional Information

Disposal; Electrical and electronic equipment, Packaging	Oct 15, 2018		Download
		265.8 kB	

CAD files

CAD data

3D Download 286-742		URL	Download
---------------------	--	-----	----------

Subject to changes.

WAGO Corporation
Germantown, WI 53022
32423 Minden
Phone: +49571 887-0 | Fax: (262) 255-6222
Email: info.us@wago.com | Web: www.wago.com

Do you have any questions about our products?
We are always happy to take your call at {0}.