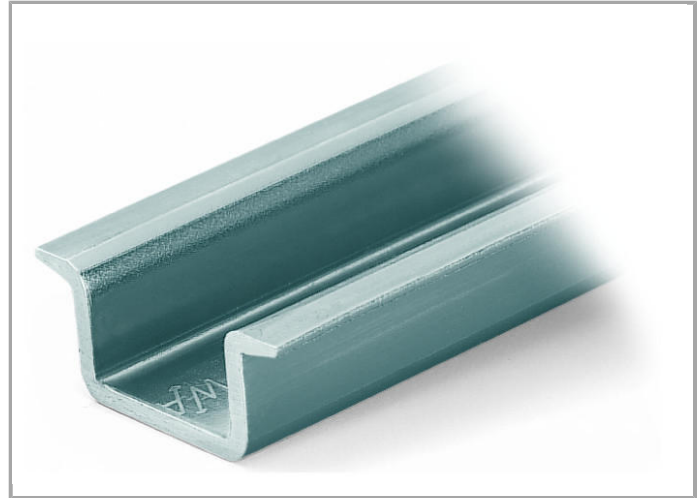
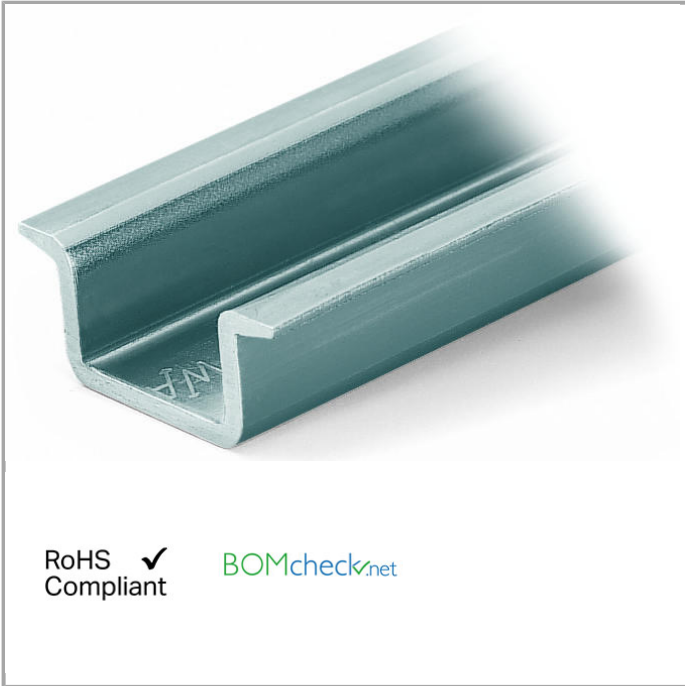


Data sheet | Item number: 210-118

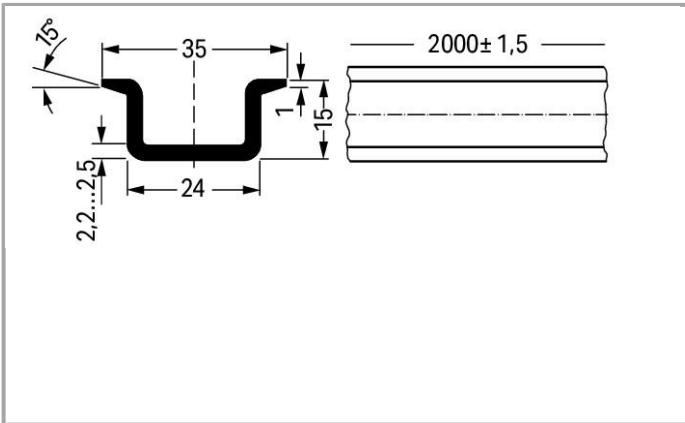
Steel carrier rail; 35 x 15 mm; 2.3 mm thick; 2 m long; unslotted; according to EN 60715



www.wago.com/210-118



RoHS Compliant BOMcheck.net



Data

Technical Data

Main product function

Mounting Accessories

Geometrical Data

Abmessungen B x H x T (mm)

(2000 x 15 x 35) mm

Width

2000 mm / 78.74 inch

Abmessungen B x H x T (inch)

(78.74 x 0.591 x 1.378) inch

Height	15 mm / 0.591 inch
Depth	35 mm / 1.378 inch

Material Data

Color	bluish, tinned, chromed, CR3
Weight	1820 g

Commercial data

Country of origin	IT
GTIN	4017332277181
Product Group	2 (Terminal Block Accessories)

Compatible products

assembling



Item no.: 209-137
Mounting adapter; can be used as end plate; 6.5 mm wide

www.wago.com/209-137



Item no.: 249-116
Screwless end stop; 6 mm wide

www.wago.com/249-116



Item no.: 249-117
Screwless end stop; 10 mm wide

www.wago.com/249-117



Item no.: 249-197
Screwless end stop; 14 mm wide

www.wago.com/249-197

Marking accessories



Item no.: 210-708
Labels; for TP printers

www.wago.com/210-708



Item no.: 210-808
Labels; for smartPRINTER

www.wago.com/210-808

Downloads

Documentation

Bid Text

210-118	Oct 10, 2017	DOC 24.1 kB	Download
---------	--------------	----------------	----------

CAD files

CAD data

3D Download 210-118



[URL](#)

[Download](#)

Subject to changes.

WAGO Corporation
Germantown, WI 53022
32423 Minden
Phone: +49571 887-0 | Fax: (262) 255-6222
Email: info.us@wago.com | Web: www.wago.com

Do you have any questions about our products?
We are always happy to take your call at {0}.