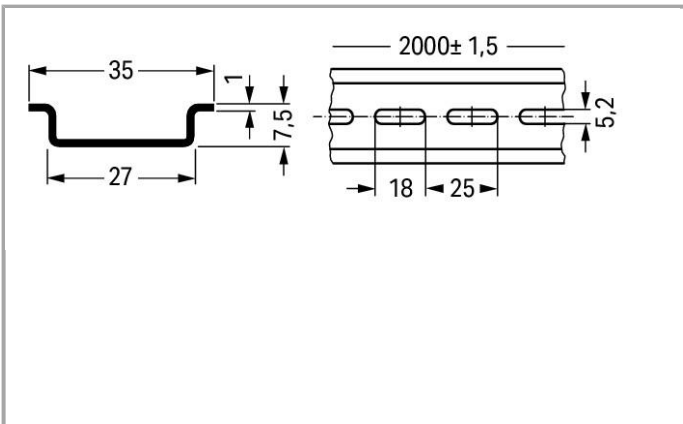


Data sheet | Item number: 210-115

Steel carrier rail; 35 x 7.5 mm; 1 mm thick; 2 m long; slotted; according to EN 60715; "Hole width 18 mm



www.wago.com/210-115



Data

Technical Data

Main product function

Mounting Accessories

Geometrical Data

Abmessungen B x H x T (mm)	(2000 x 7.5 x 35) mm
Width	2000 mm / 78.74 inch
Abmessungen B x H x T (inch)	(78.74 x 0.295 x 1.378) inch
Height	7.5 mm / 0.295 inch
Depth	35 mm / 1.378 inch

Material Data

Color	bluish, tinned, chromed, CR3
Weight	630 g

Commercial data







Country of origin	IT
GTIN	4045454846268
Product Group	2 (Terminal Block Accessories)

Compatible products

Marking accessories

	Item no.: 210-708 Labels; for TP printers	www.wago.com/210-708
	Item no.: 210-808 Labels; for smartPRINTER	www.wago.com/210-808

assembling

	Item no.: 209-137 Mounting adapter; can be used as end plate; 6.5 mm wide	www.wago.com/209-137
	Item no.: 210-148 Angled support bracket; without screw	www.wago.com/210-148
	Item no.: 210-149 Screw M 5 x 8; for angled support bracket	www.wago.com/210-149
	Item no.: 249-116 Screwless end stop; 6 mm wide	www.wago.com/249-116
	Item no.: 249-117 Screwless end stop; 10 mm wide	www.wago.com/249-117
	Item no.: 249-197 Screwless end stop; 14 mm wide	www.wago.com/249-197

General accessories

	Item no.: 209-109 Edge guards; for DIN 35 rail (7.5 mm high)	www.wago.com/209-109
--	--	--

Downloads

Documentation

Bid Text

210-115	Oct 10, 2017	DOC 24.1 kB	Download
---------	--------------	----------------	----------



CAD files

CAD data

	URL	Download
3D Download 210-115		

Subject to changes.

WAGO Corporation
Germantown, WI 53022
32423 Minden
Phone: +49571 887-0 | Fax: (262) 255-6222
Email: info.us@wago.com | Web: www.wago.com

Do you have any questions about our products?
We are always happy to take your call at {0}.