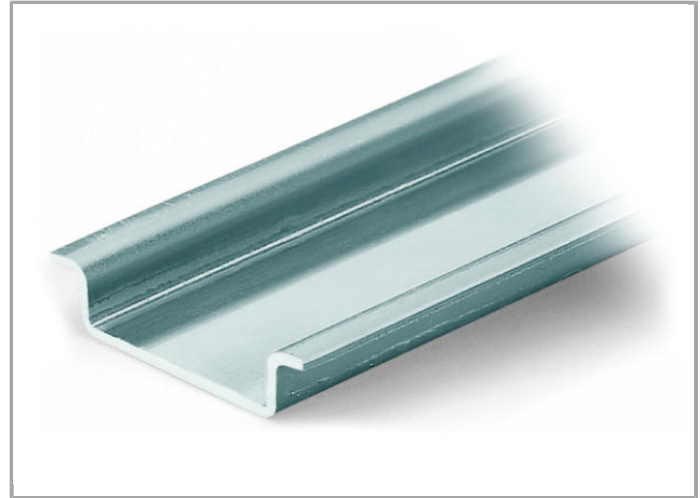
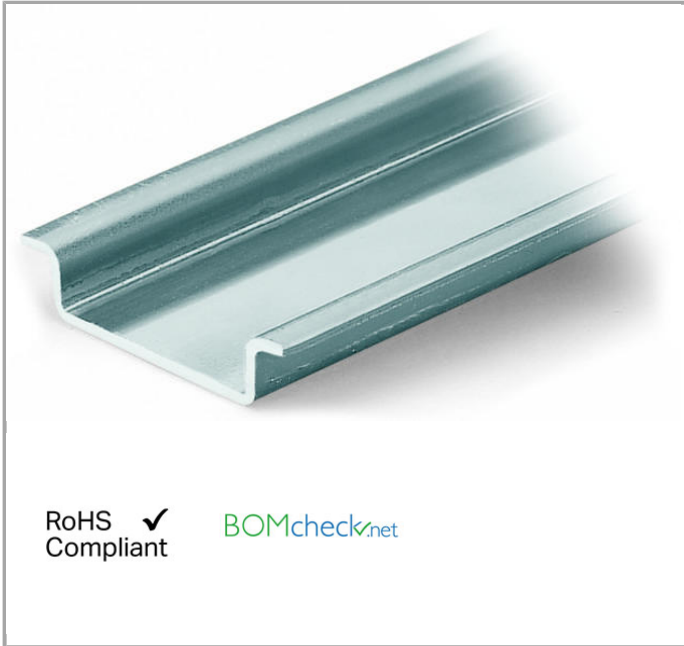


Data sheet | Item number: 210-113

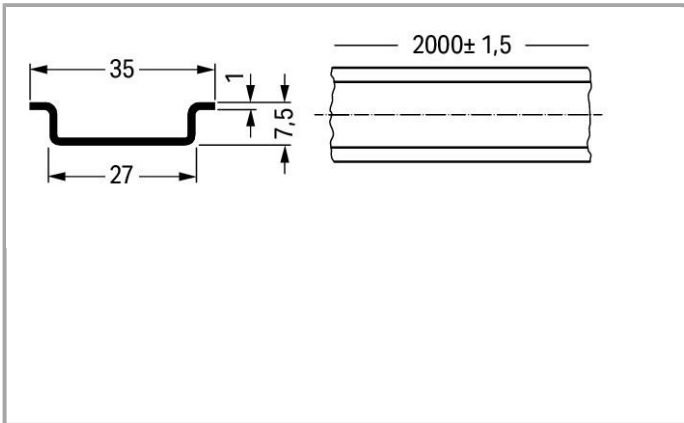
Steel carrier rail; 35 x 7.5 mm; 1 mm thick; 2 m long; unslotted; according to EN 60715



www.wago.com/210-113



RoHS  Compliant 



Data

Technical Data

Main product function

Mounting Accessories

Geometrical Data

Abmessungen B x H x T (mm)	(2000 x 7.5 x 35) mm
Width	2000 mm / 78.74 inch
Abmessungen B x H x T (inch)	(78.74 x 0.295 x 1.378) inch
Height	7.5 mm / 0.295 inch

Depth	35 mm / 1.378 inch
-------	--------------------

Material Data

Color	bluish, tinned, chromed, CR3
Weight	690 g

Commercial data

Country of origin	IT
GTIN	4017332272308
Product Group	2 (Terminal Block Accessories)

Compatible products

assembling



Item no.: 209-137
Mounting adapter; can be used as end plate; 6.5 mm wide

www.wago.com/209-137



Item no.: 249-116
Screwless end stop; 6 mm wide

www.wago.com/249-116



Item no.: 249-117
Screwless end stop; 10 mm wide

www.wago.com/249-117



Item no.: 249-197
Screwless end stop; 14 mm wide

www.wago.com/249-197

General accessories



Item no.: 209-109
Edge guards; for DIN 35 rail (7.5 mm high)

www.wago.com/209-109

Marking accessories



Item no.: 210-708
Labels; for TP printers

www.wago.com/210-708



Item no.: 210-808
Labels; for smartPRINTER

www.wago.com/210-808

Downloads

Documentation

Bid Text

210-113	Oct 10, 2017	DOC 24.1 kB	Download
---------	--------------	----------------	----------



CAD files

CAD data

3D Download 210-113

URL

Download

Subject to changes.

WAGO Corporation
Germantown, WI 53022
32423 Minden
Phone: +49571 887-0 | Fax: (262) 255-6222
Email: info.us@wago.com | Web: www.wago.com

Do you have any questions about our products?
We are always happy to take your call at {0}.