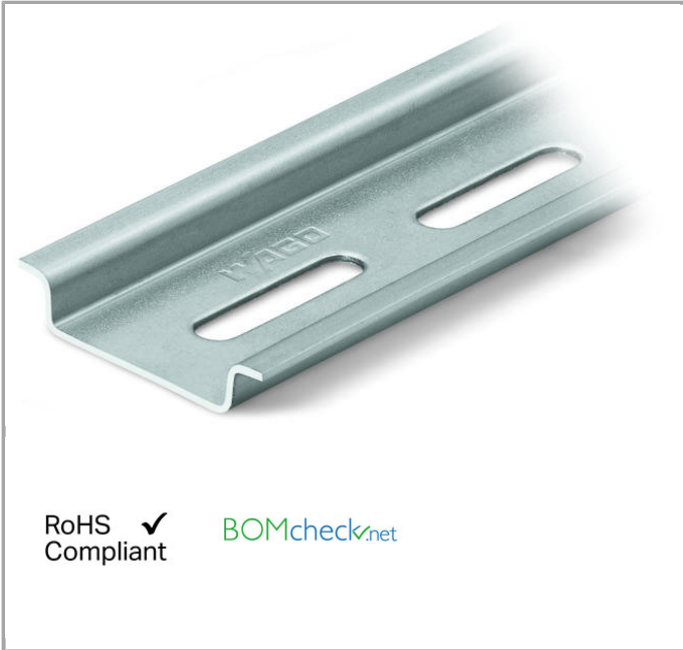


## Data sheet | Item number: 210-112

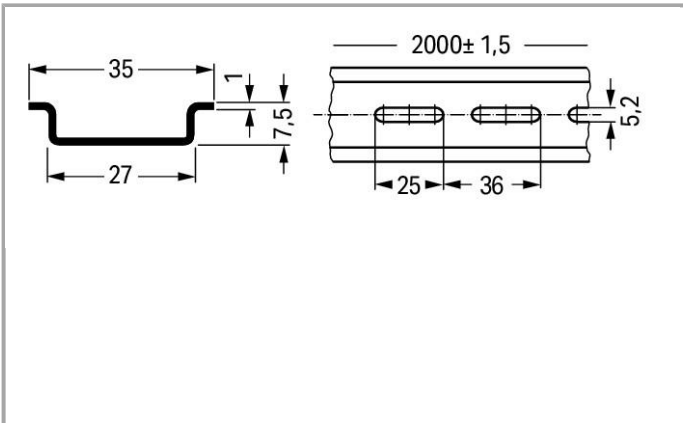
Steel carrier rail; 35 x 7.5 mm; 1 mm thick; 2 m long; slotted; according to EN 60715; "Hole width 25 mm



[www.wago.com/210-112](http://www.wago.com/210-112)



RoHS  Compliant [BOMcheck.net](https://www.bomcheck.net)



### Data

#### Technical Data

Main product function

Mounting Accessories

#### Geometrical Data

Abmessungen B x H x T (mm)	(2000 x 7.5 x 35) mm
Width	2000 mm / 78.74 inch
Abmessungen B x H x T (inch)	(78.74 x 0.295 x 1.378) inch
Height	7.5 mm / 0.295 inch

Depth	35 mm / 1.378 inch
-------	--------------------

## Material Data







Color	bluish, tinned, chromed, CR3
Weight	630 g

## Commercial data

Country of origin	IT
GTIN	4017332272292
Product Group	2 (Terminal Block Accessories)

## Compatible products

### assembling

	<b>Item no.: 209-137</b> Mounting adapter; can be used as end plate; 6.5 mm wide	<a href="http://www.wago.com/209-137">www.wago.com/209-137</a>
	<b>Item no.: 210-148</b> Angled support bracket; without screw	<a href="http://www.wago.com/210-148">www.wago.com/210-148</a>
	<b>Item no.: 210-149</b> Screw M 5 x 8; for angled support bracket	<a href="http://www.wago.com/210-149">www.wago.com/210-149</a>
	<b>Item no.: 249-116</b> Screwless end stop; 6 mm wide	<a href="http://www.wago.com/249-116">www.wago.com/249-116</a>
	<b>Item no.: 249-117</b> Screwless end stop; 10 mm wide	<a href="http://www.wago.com/249-117">www.wago.com/249-117</a>
	<b>Item no.: 249-197</b> Screwless end stop; 14 mm wide	<a href="http://www.wago.com/249-197">www.wago.com/249-197</a>

### General accessories

	<b>Item no.: 209-109</b> Edge guards; for DIN 35 rail (7.5 mm high)	<a href="http://www.wago.com/209-109">www.wago.com/209-109</a>
--	--	--

### Marking accessories

	<b>Item no.: 210-708</b> Labels; for TP printers	<a href="http://www.wago.com/210-708">www.wago.com/210-708</a>
	<b>Item no.: 210-808</b> Labels; for smartPRINTER	<a href="http://www.wago.com/210-808">www.wago.com/210-808</a>

## Downloads

### Documentation

### Bid Text



210-112  
Zubehör

Oct 9, 2017

DOC  
24.1 kB

Download

---

### CAD files

#### CAD data

3D Download 210-112

URL

Download

---

Subject to changes.

---

WAGO Corporation  
Germantown, WI 53022  
32423 Minden  
Phone: +49571 887-0 | Fax: (262) 255-6222  
Email: [info.us@wago.com](mailto:info.us@wago.com) | Web: [www.wago.com](http://www.wago.com)

Do you have any questions about our products?  
We are always happy to take your call at {0}.